

Neues Chalet, Saanenbüel, 3792 Saanen

Datum: 18.06.2013



Moratti & Söhne AG

Hoch-, Tief- & Strassenbau

Tel.: +41 33 748 45 20

E-mail: moratti.soehne@bluewin.ch

Mor11

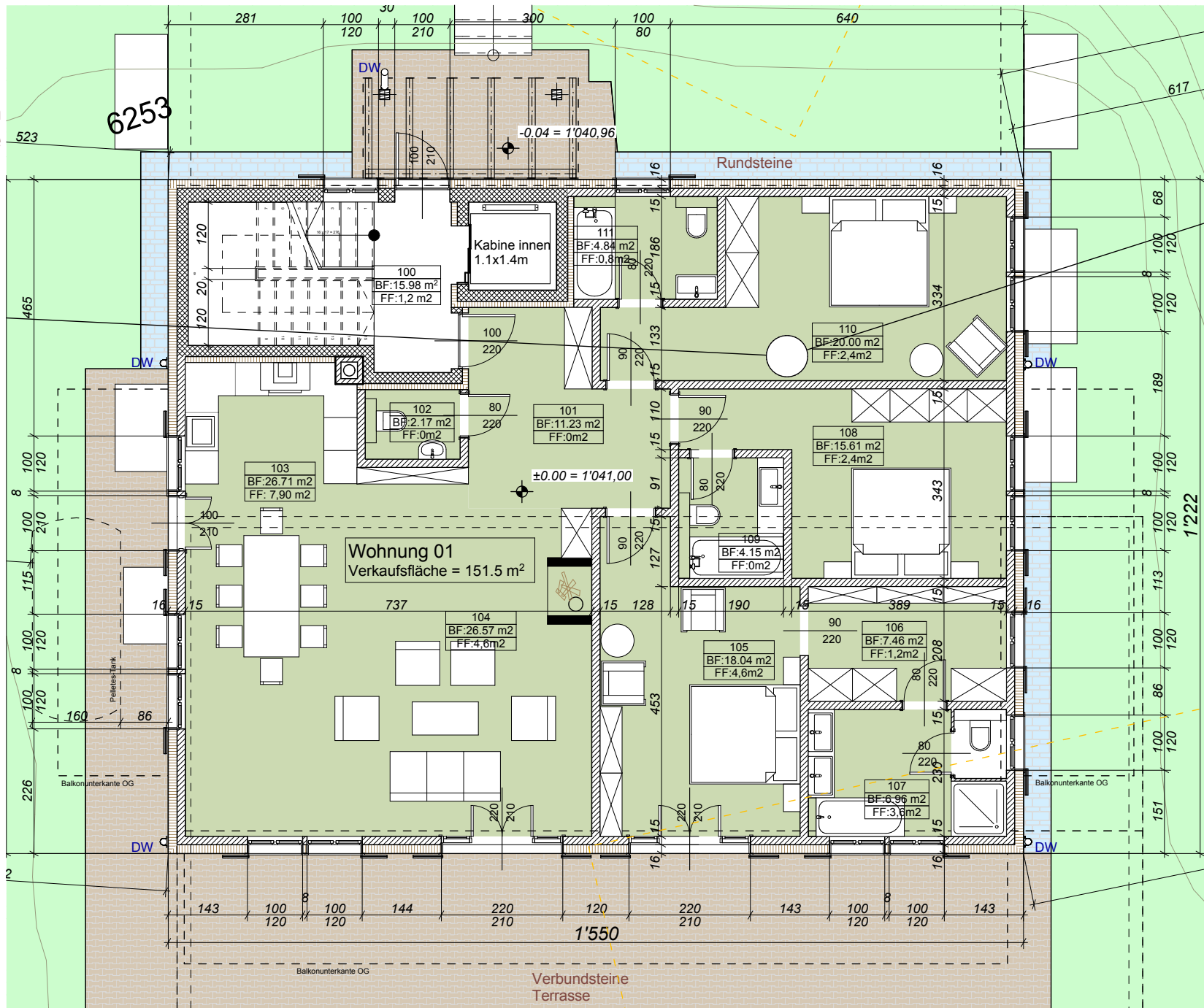
Neubau MFH, Parz. 6253, 4768, Saanenbüelweg 2, 3792 Saanen
Reichenbach Architekten ag, Chalet Zentrum, Postfach 380, CH-3780 Gstaad,
Phone / Fax +41 33 744 06 03 / 04, E-mail office@rb-arch.ch

Mor11
Moratti & Söhne AG
A4

Neues Chalet, Saanenbüel, 3792 Saanen
Erdgeschoss/rez-de-chaussée



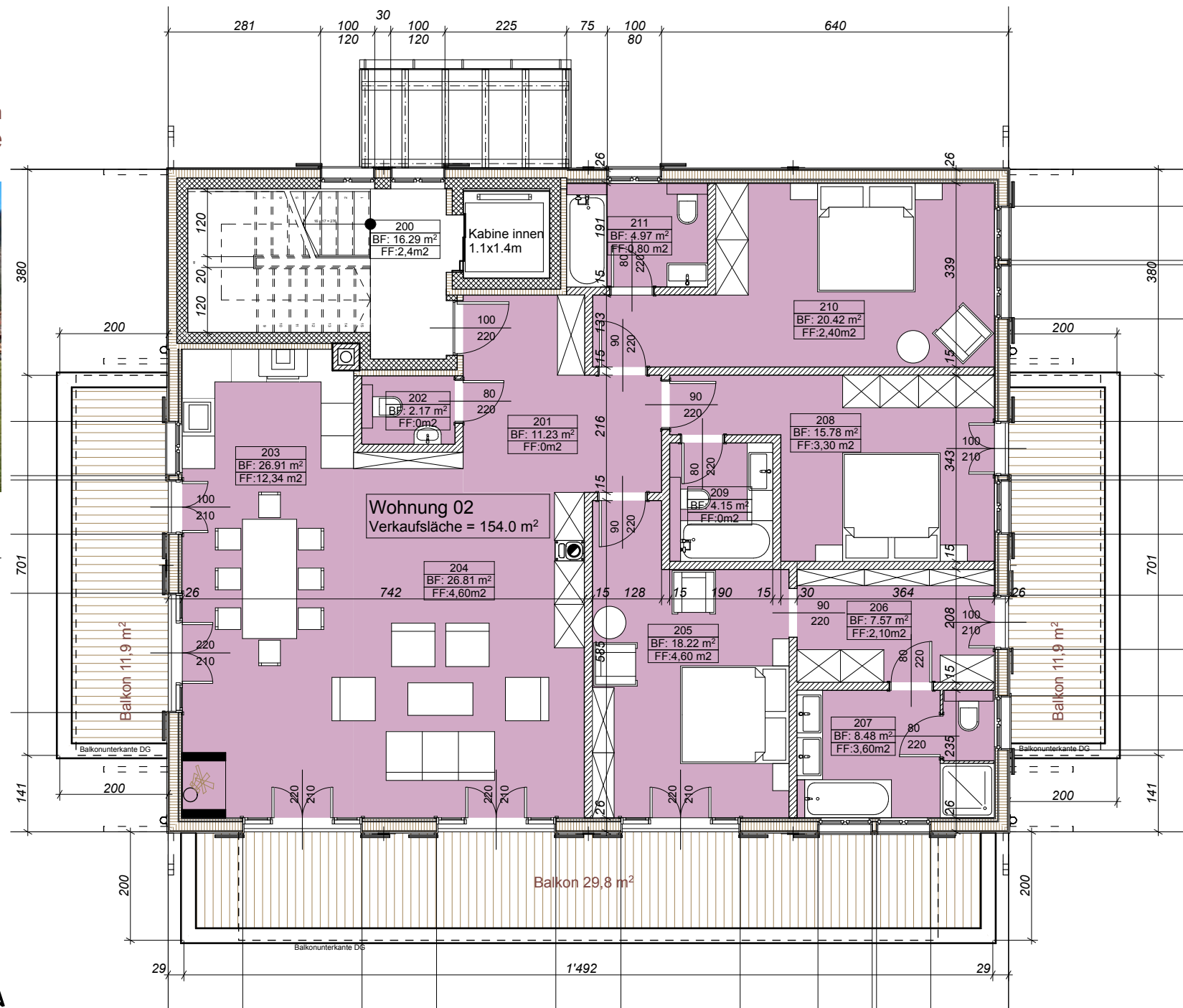
Wohnung/appartment 01 : 151.5 m²



Neues Chalet, Saanenbüel, 3792 Saanen
Obergeschoss/1er étage



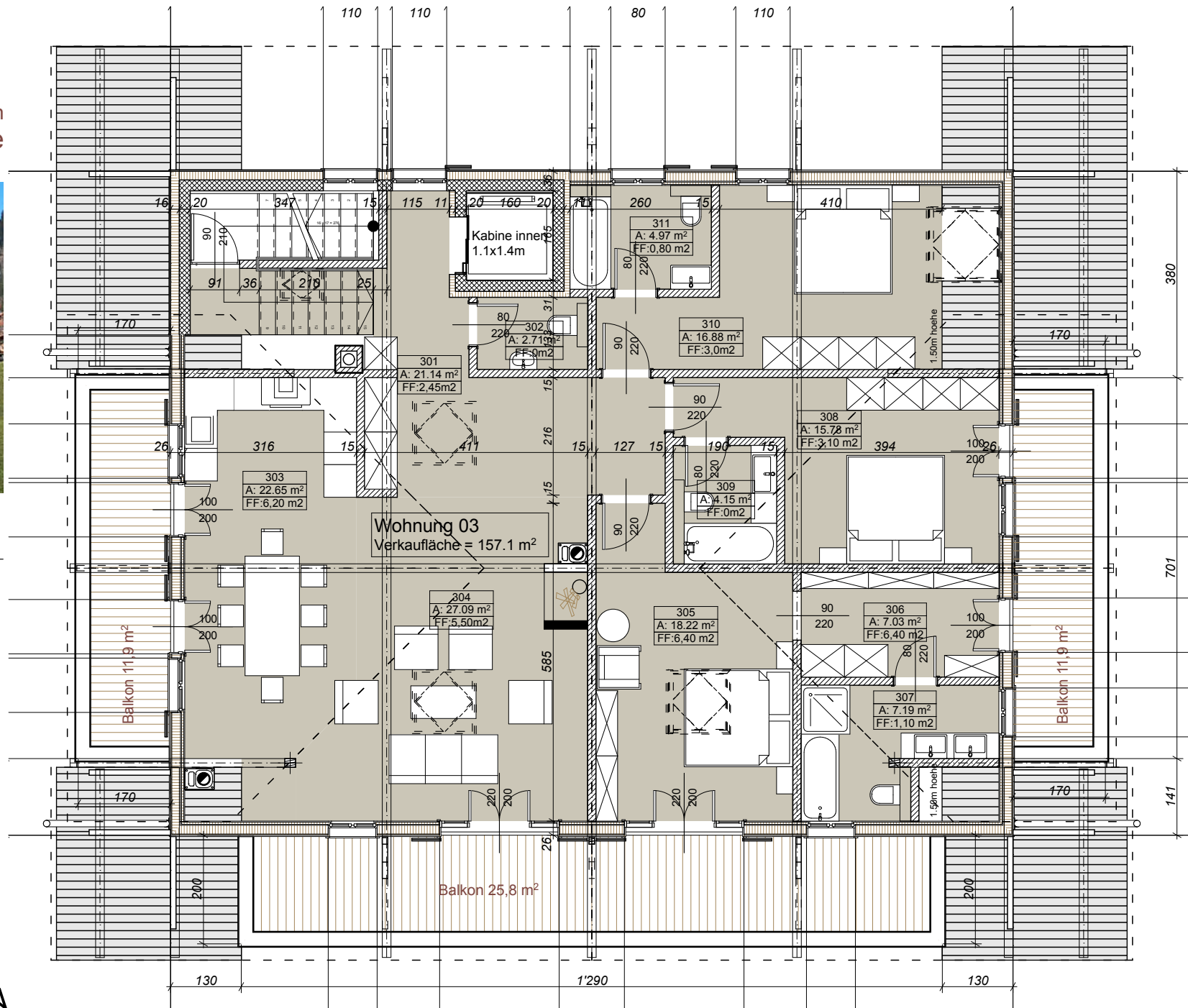
Wohnung/appartment 02 : 154.0 m²



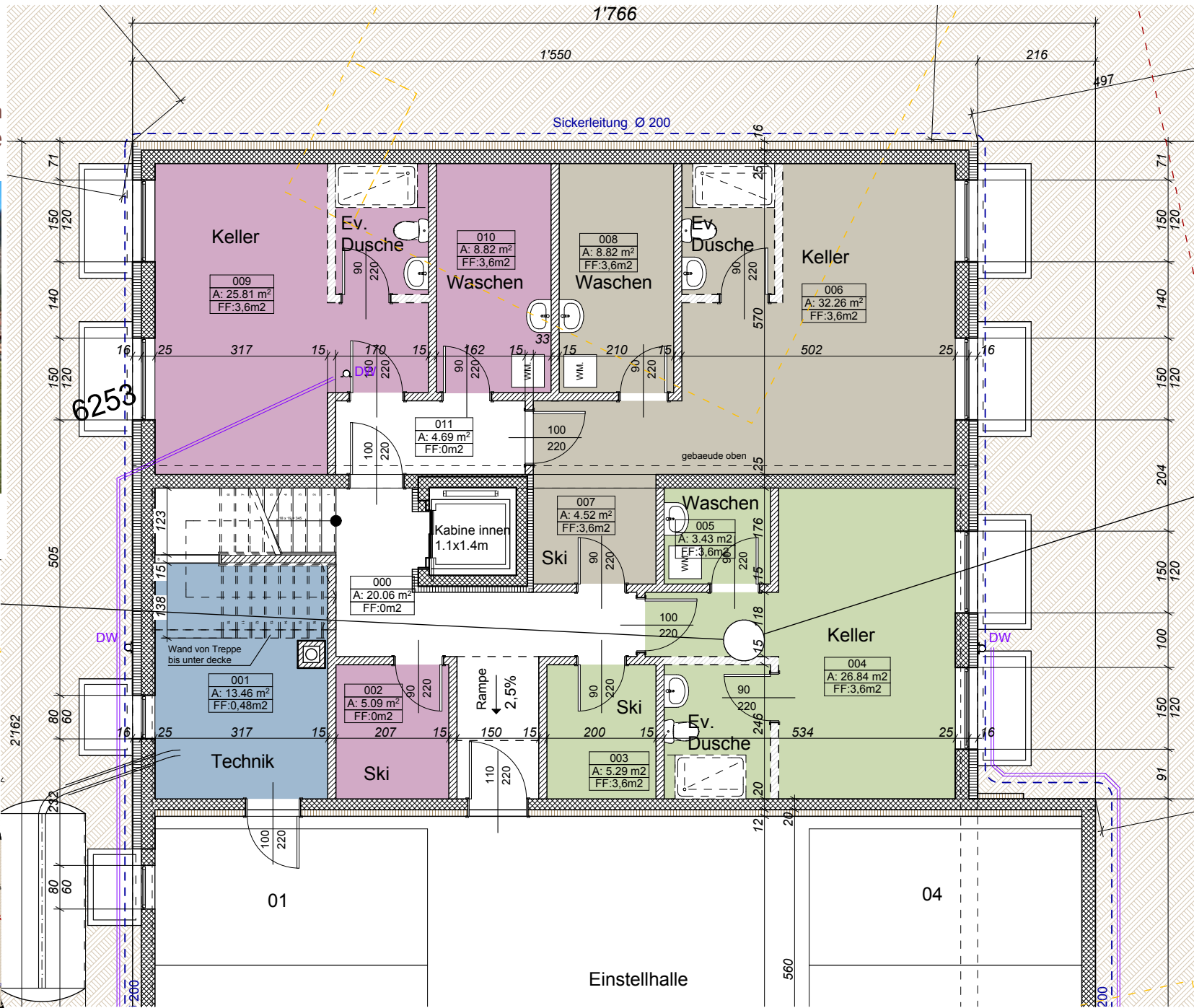
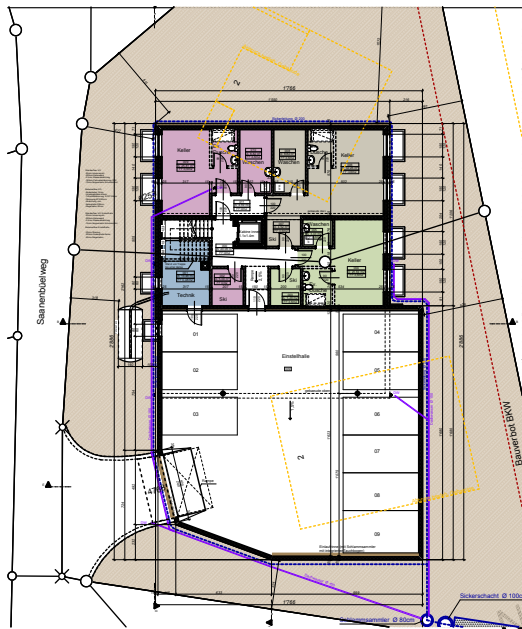
Neues Chalet, Saanenbüel, 3792 Saanen
Dachgeschoss/2ème étage

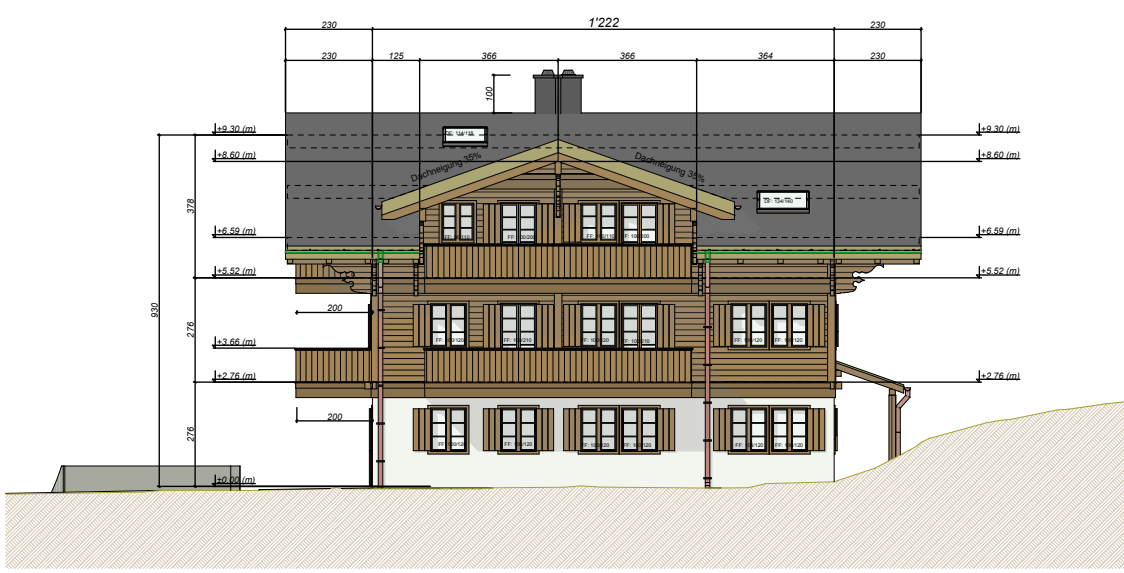


Wohnung/appartment 03 : 157.1 m²

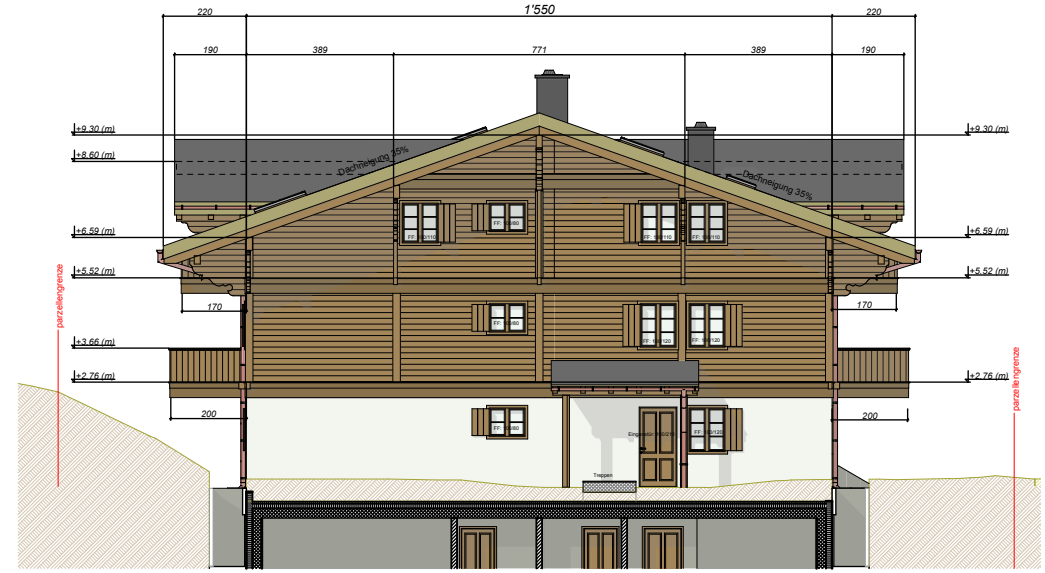


Neues Chalet, Saanenbuel, 3792 Saanen
Keller/cave

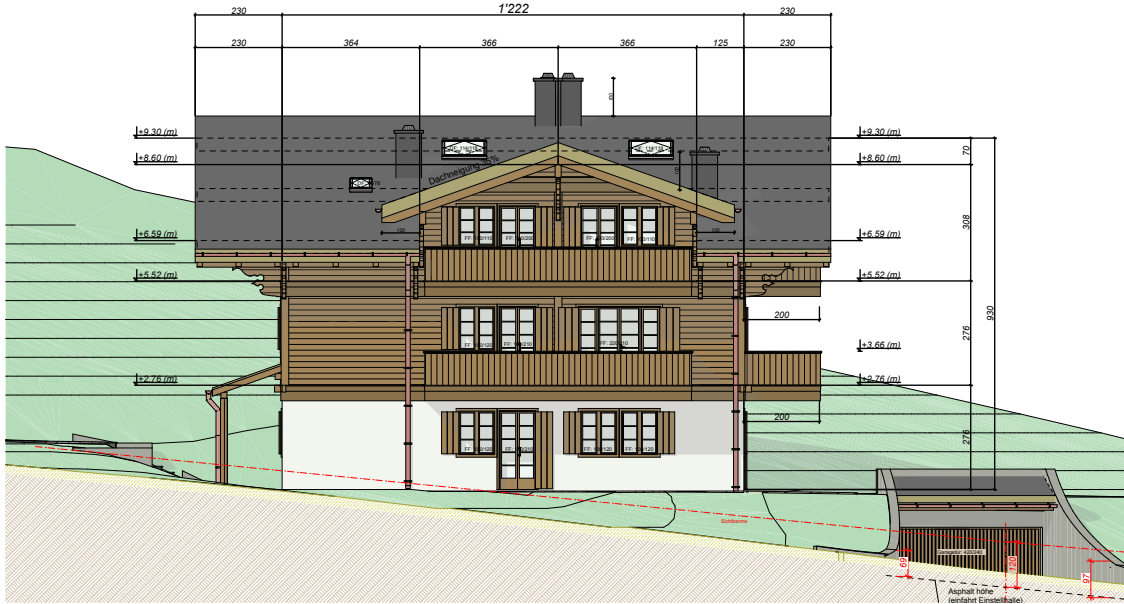




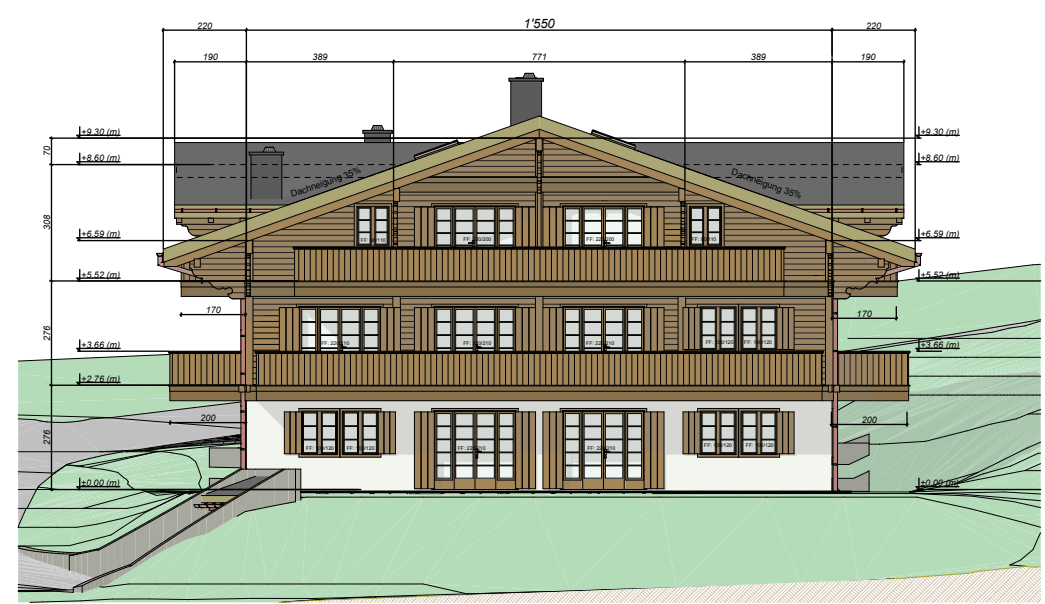
Fassade Ost



Fassade Nord



Fassade West



Fassade Süd

