



CHALETBAU MATTI

LA FORCLA

Parcelle 2315, Route de la Forcla 8, 1659 Rougemont



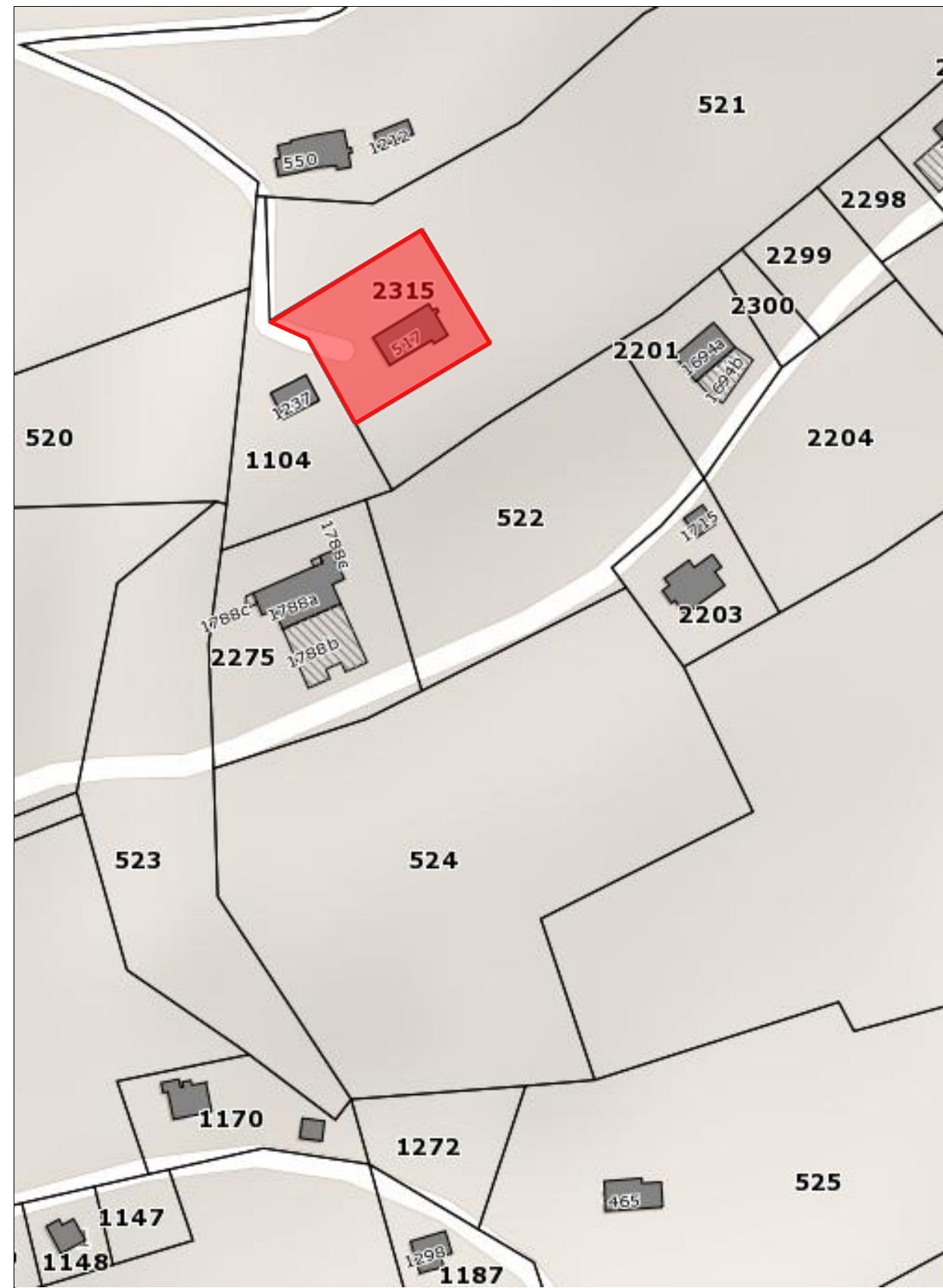
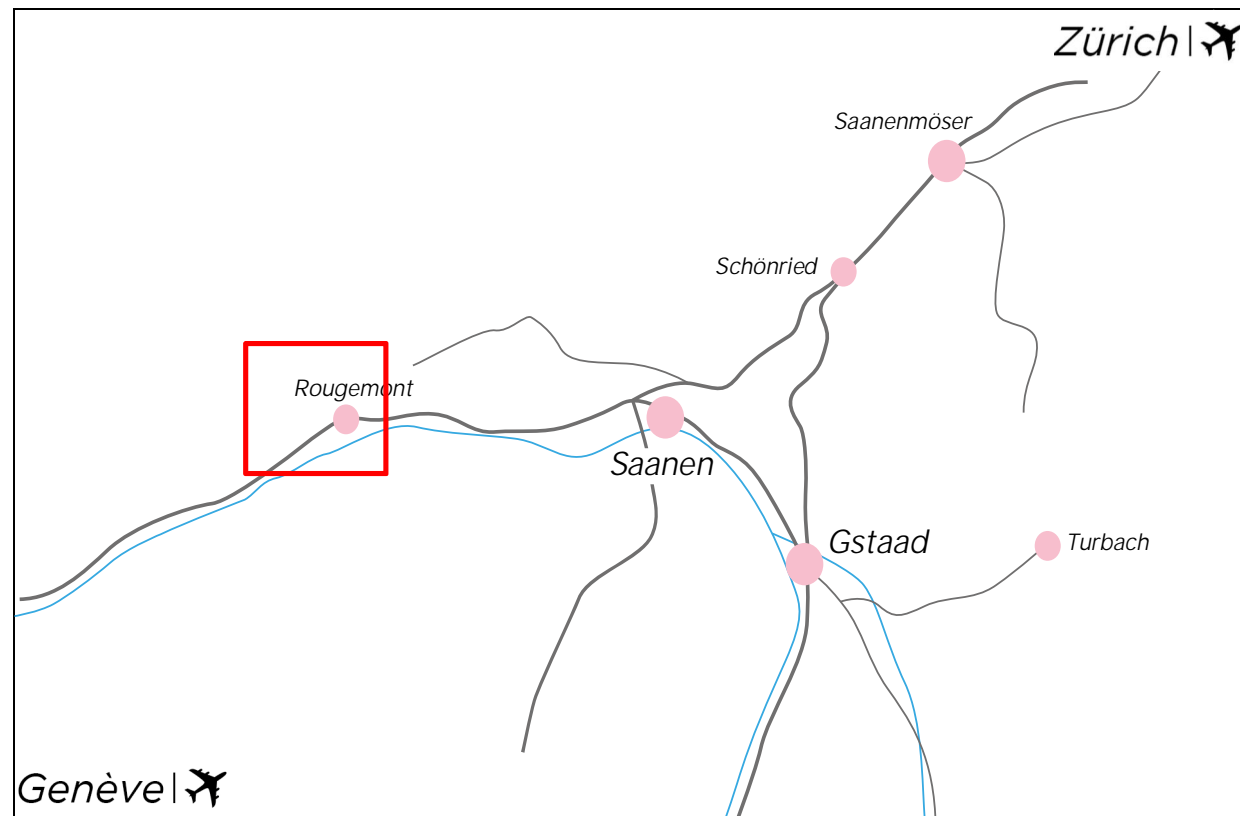
Dossier de vente
La Forcla, Parcelle 2315

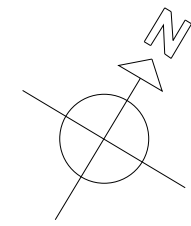
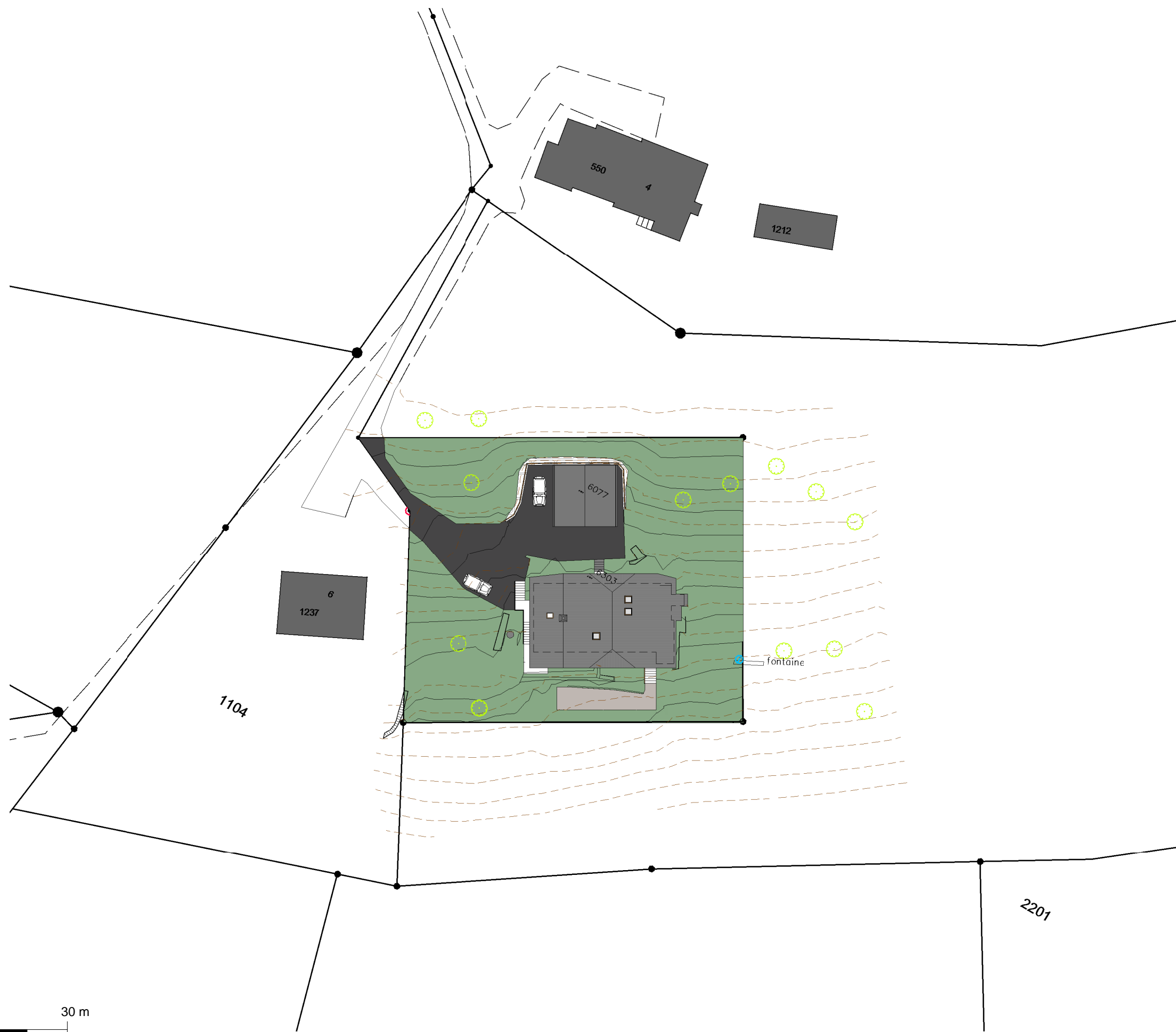
Dossier de vente

A15222, 17.06.2016



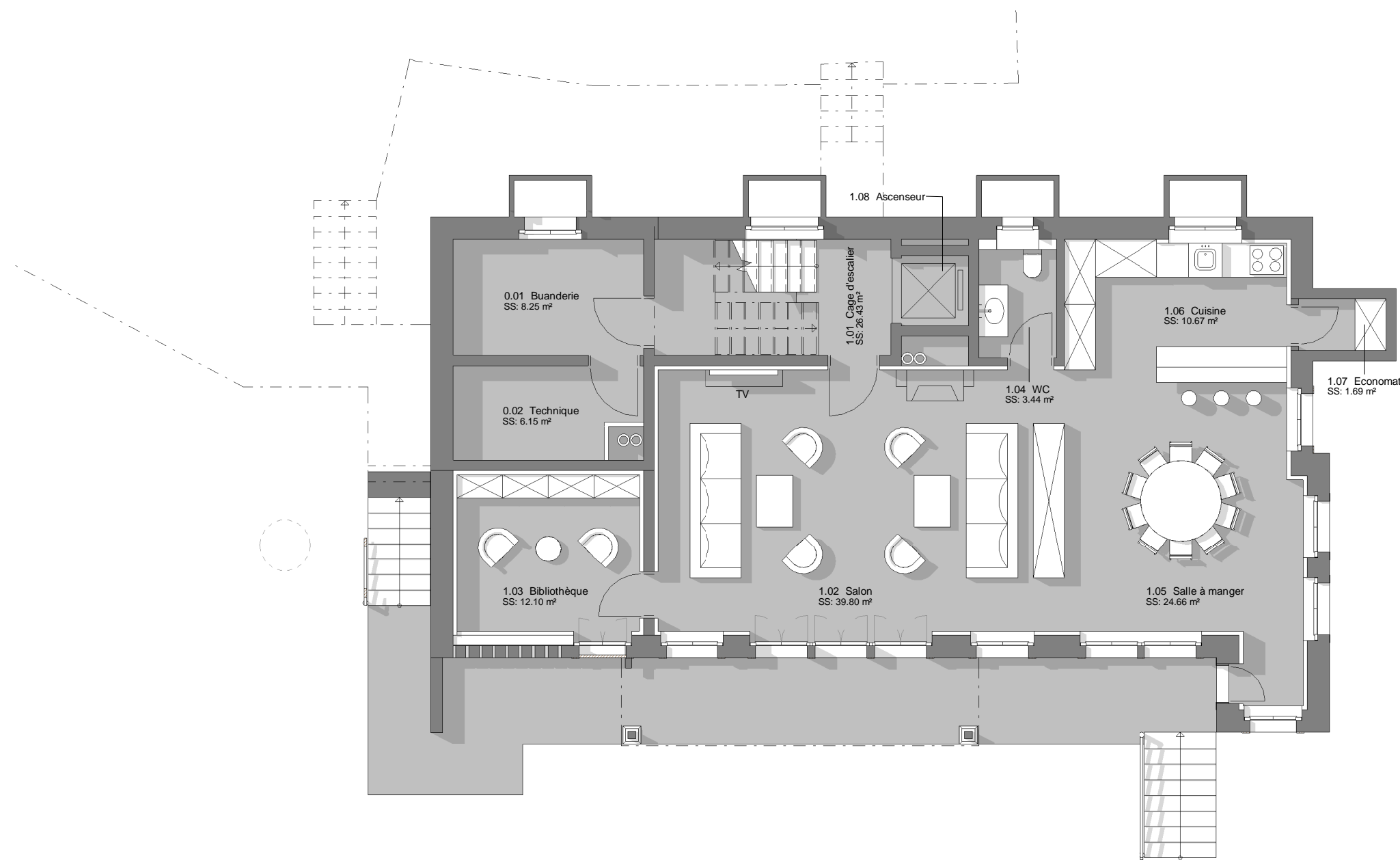




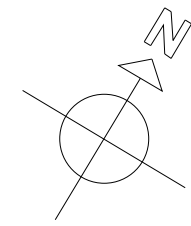


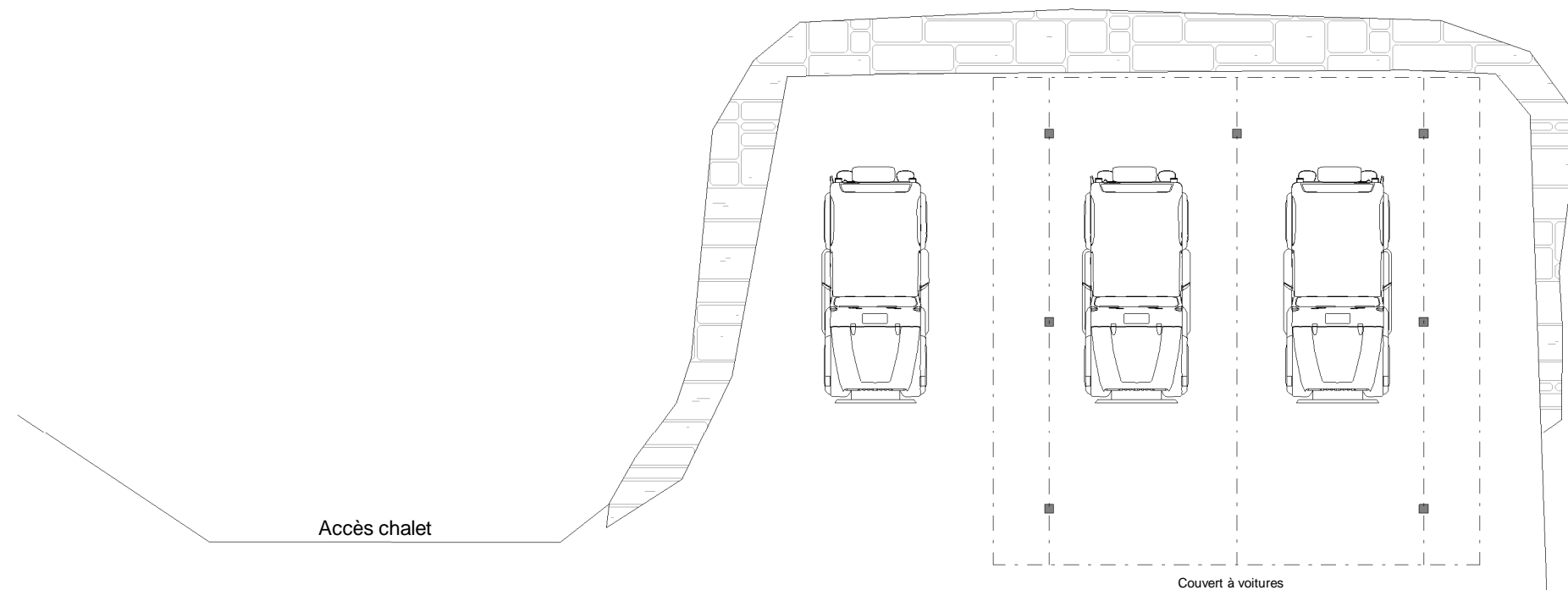
Surface de plancher SP - Rez-de-chaussée	
Niveau	Surface
Rez-de-chaussée	111.80 m ²

Surface annexe de plancher - Rez-de-chaussée	
Niveau	Surface
Sous-sol	21.09 m ²
Rez-de-chaussée	18.40 m ²
TOTAL	39.49 m²



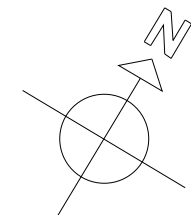
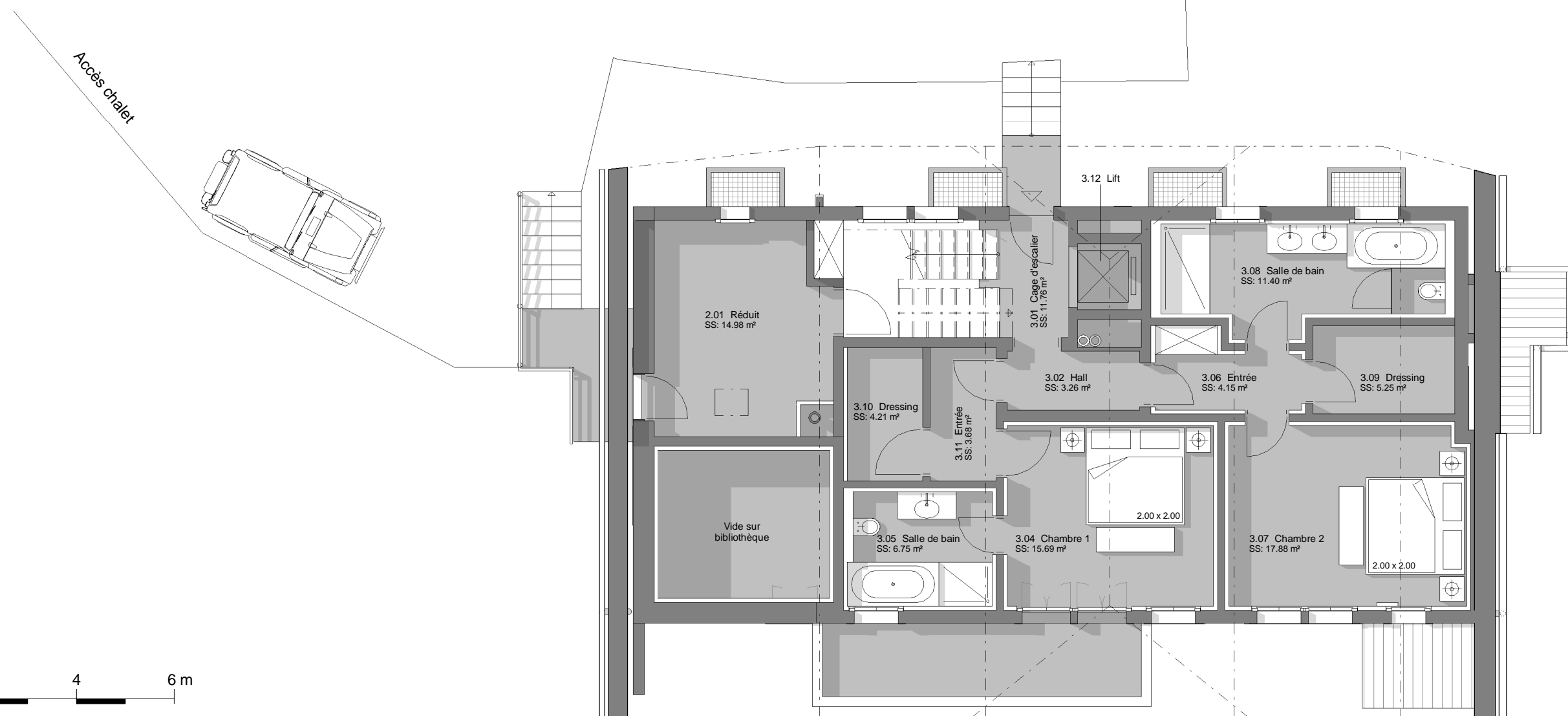
LIMITE DE PARCELLE

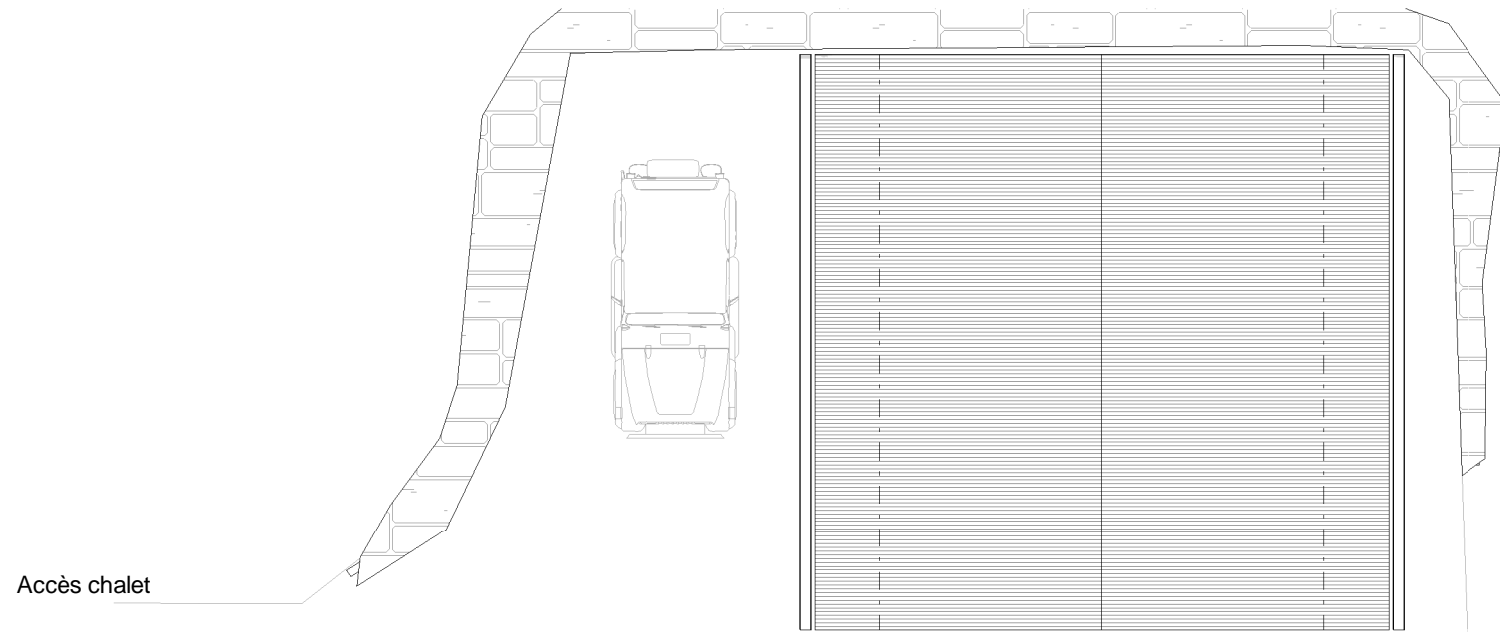




Surface de plancher SP - Etage	
Niveau	Surface
Etage	93.55 m ²

Surface annexe de plancher - Etage	
Niveau	Surface
Etage	34.47 m ²



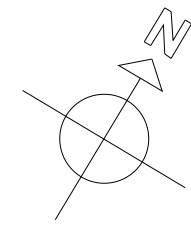
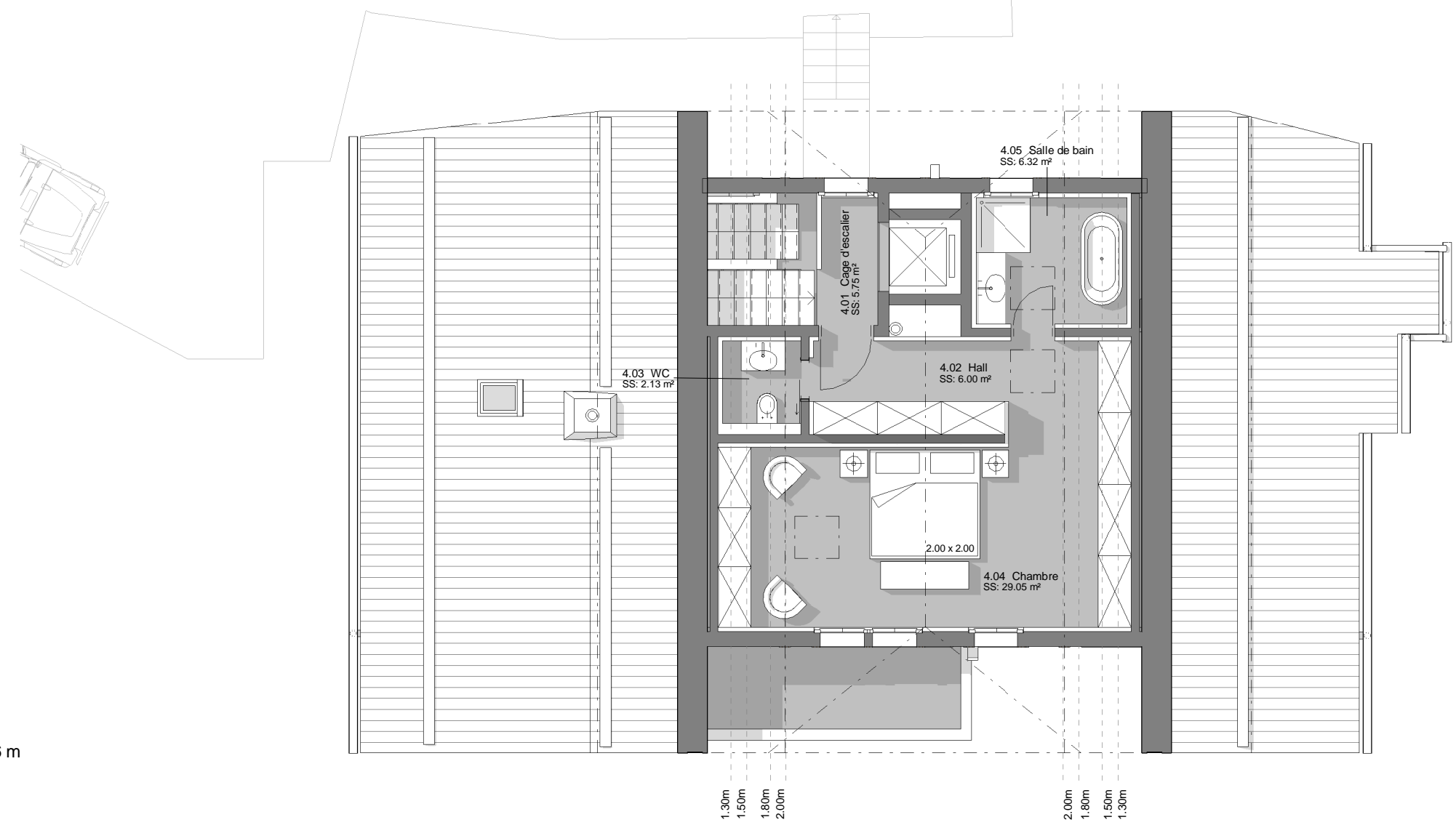


Surface de plancher SP - Combles	
Niveau	Surface
Combles	55.01 m ²

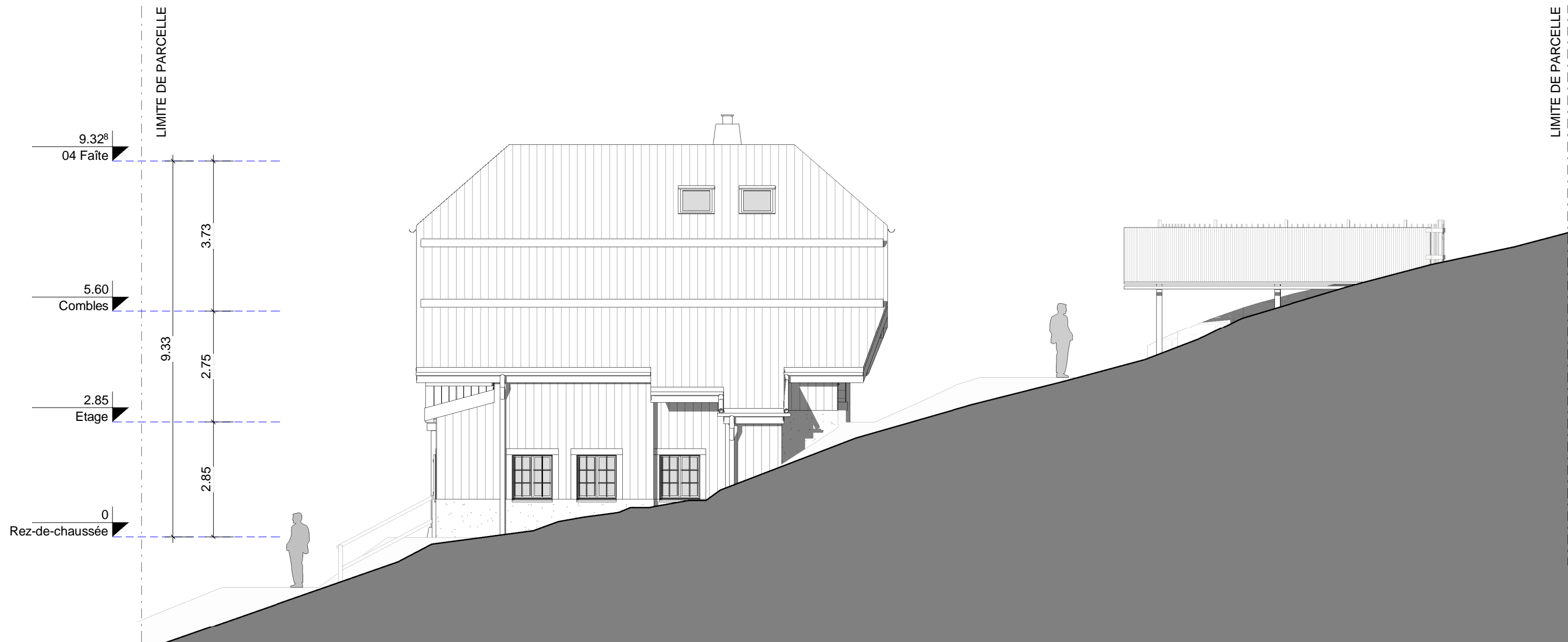
Surface annexe de plancher - Combles	
Niveau	Surface
Combles	5.90 m ²

Combles

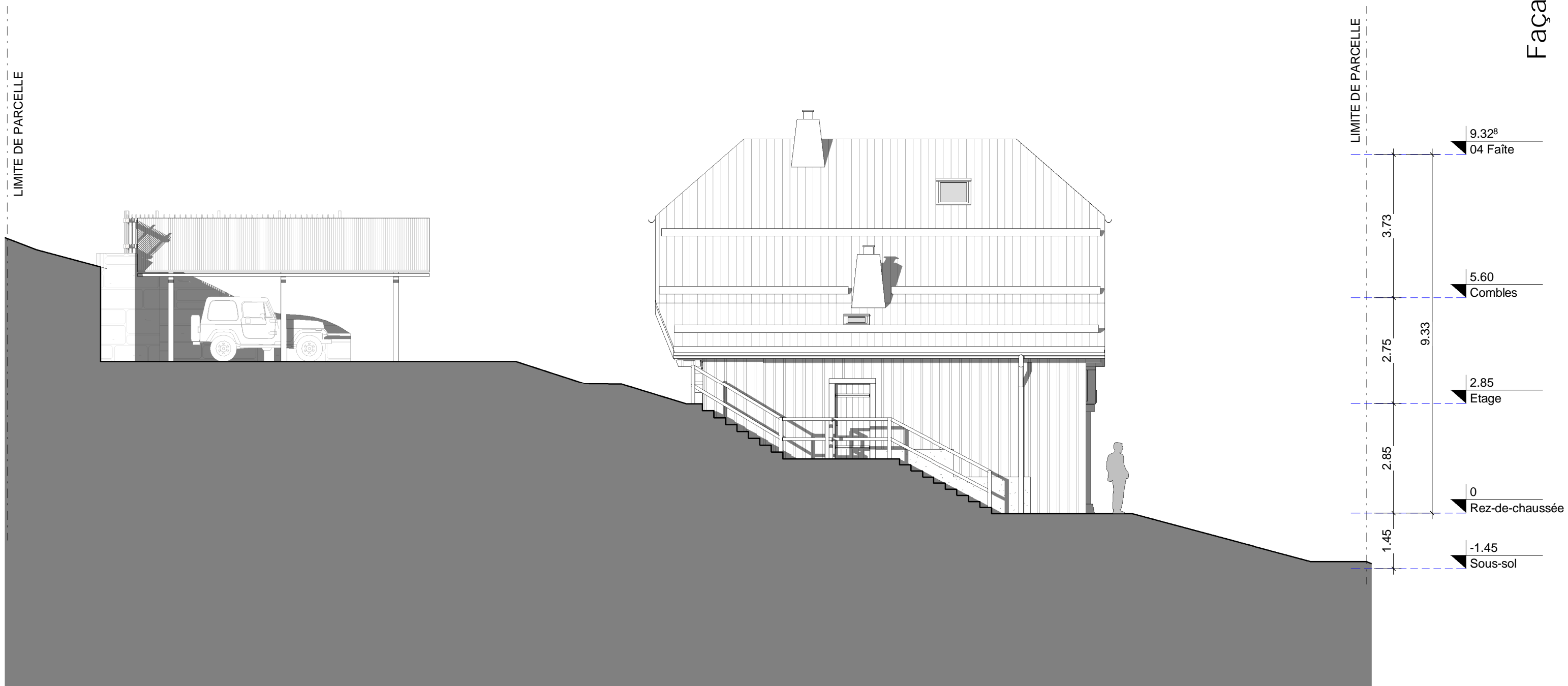
Accès chalet

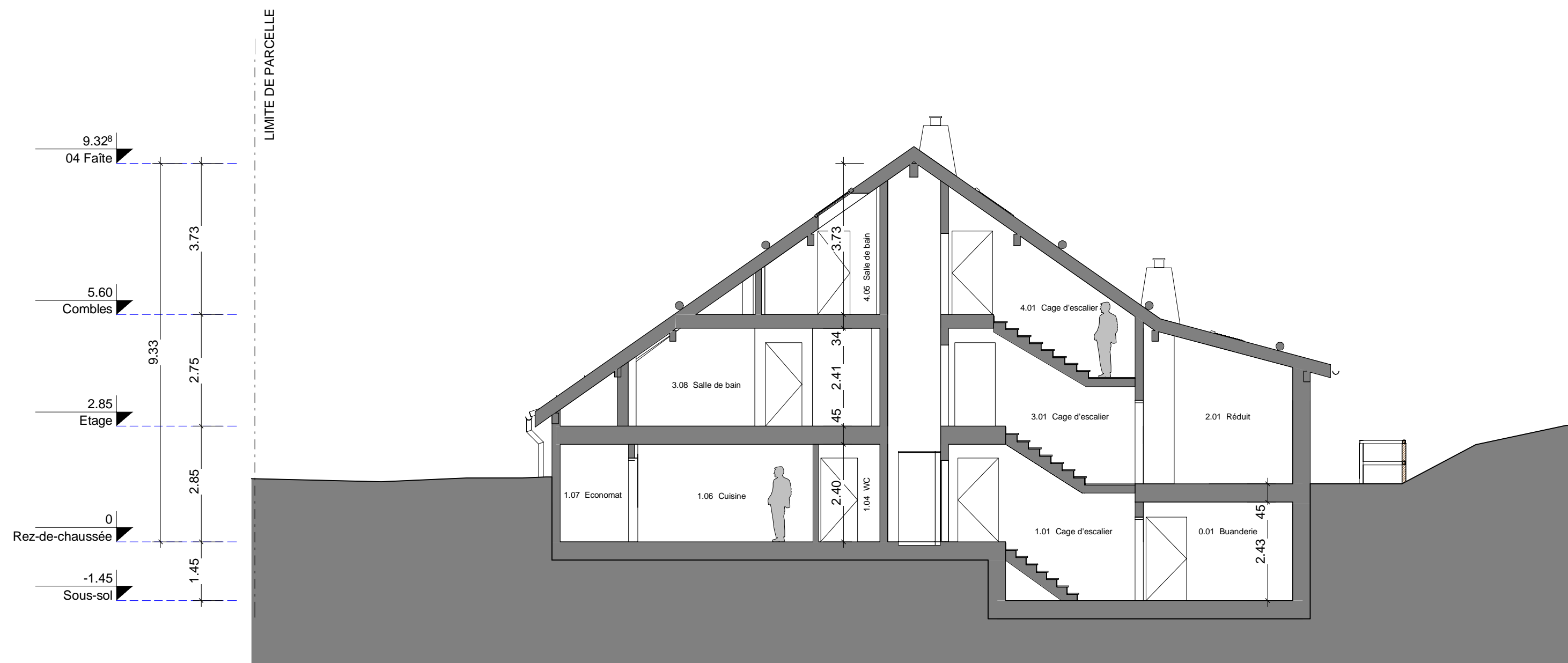


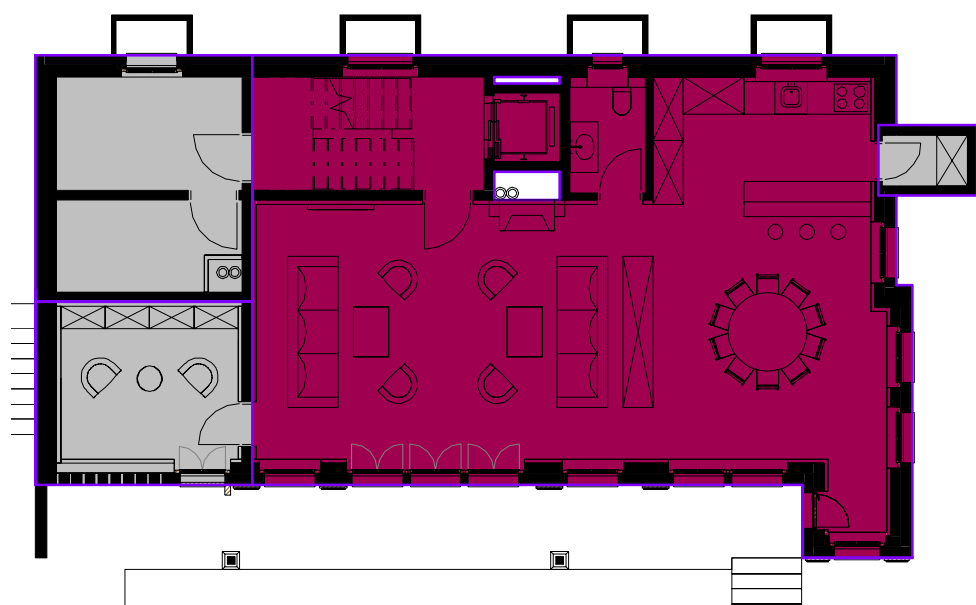




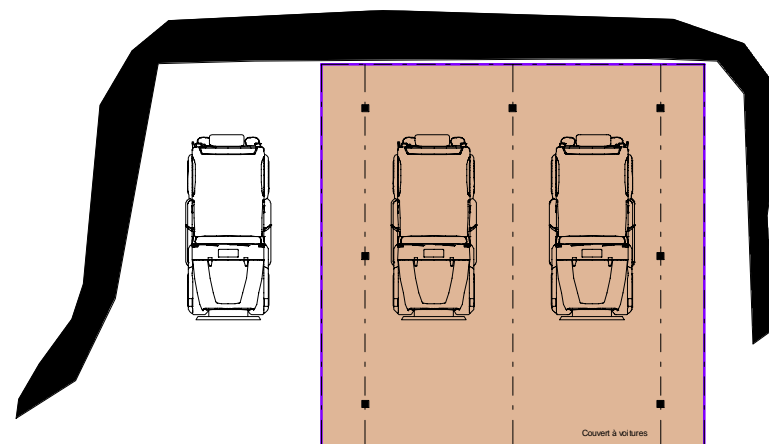








Rez-de-chaussée

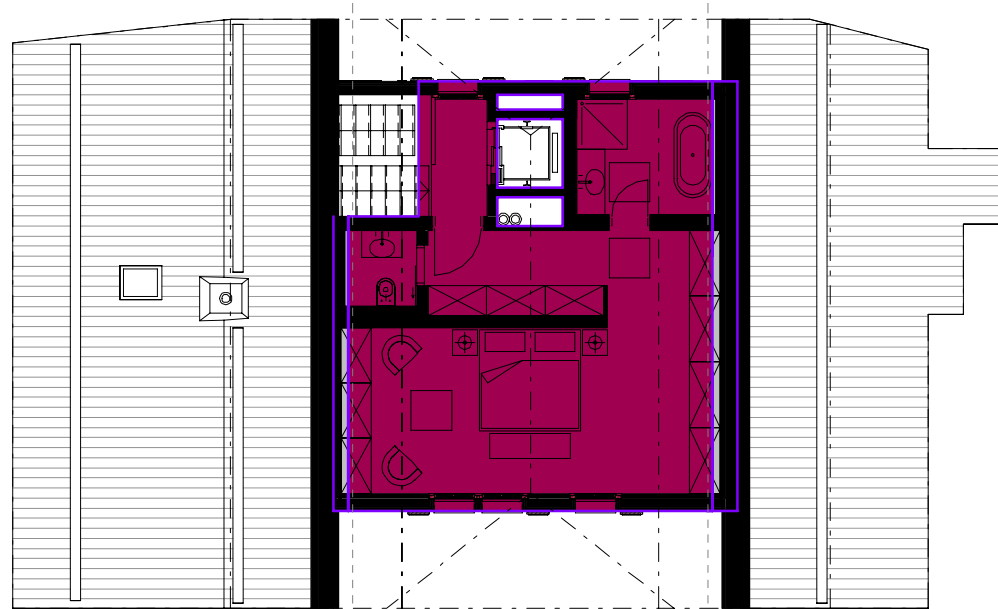


Surface de plancher SP	
Niveau	Surface
Rez-de-chaussée	111.80 m ²
Étage	93.55 m ²
Combles	55.01 m ²
TOTAL	260.37 m²

Surface annexe de plancher	
Niveau	Surface
Sous-sol	21.09 m ²
Rez-de-chaussée	18.40 m ²
Étage	34.47 m ²
Combles	5.90 m ²
TOTAL	79.85 m²

Surface totale: 397.98 m²

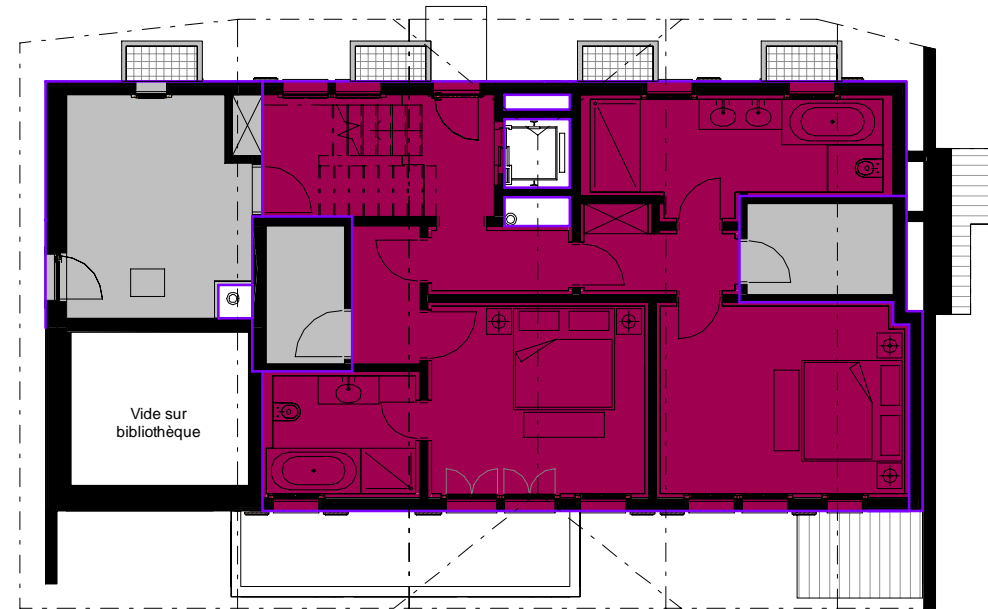
Surface externe de plancher SEP	
Niveau	Surface
Étage	57.77 m ²
TOTAL	57.77 m²



Combles

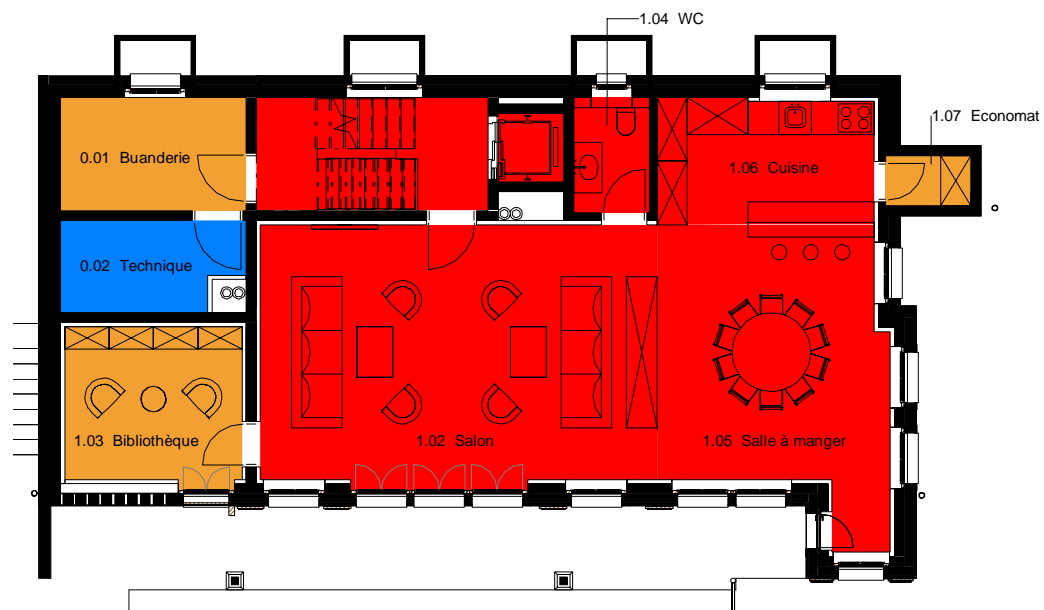
1.30m

1.30m



Étage

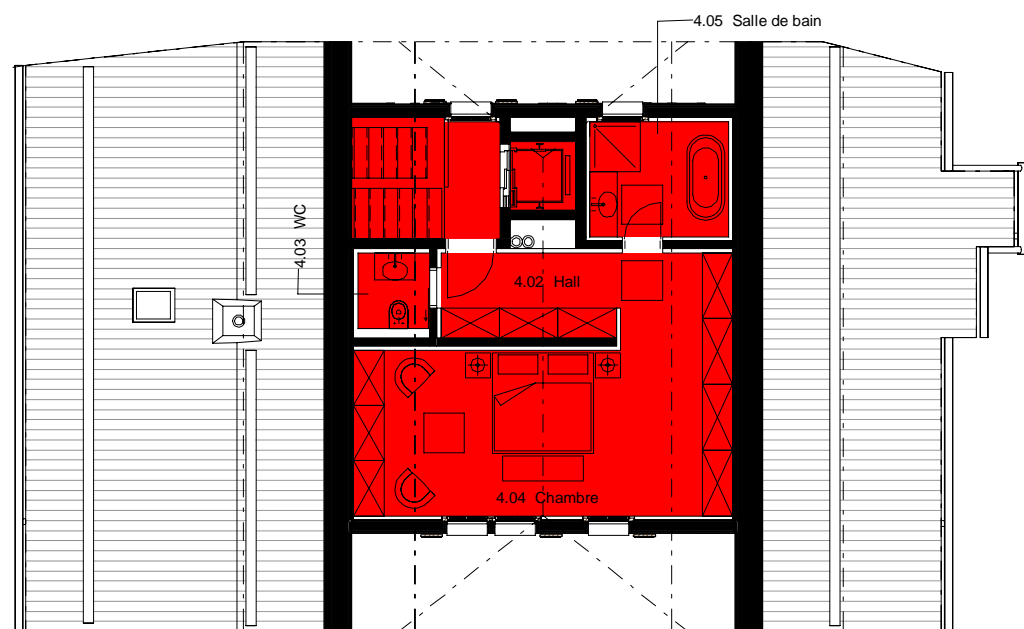
Vide sur bibliothèque



Rez-de-chaussée



Etage

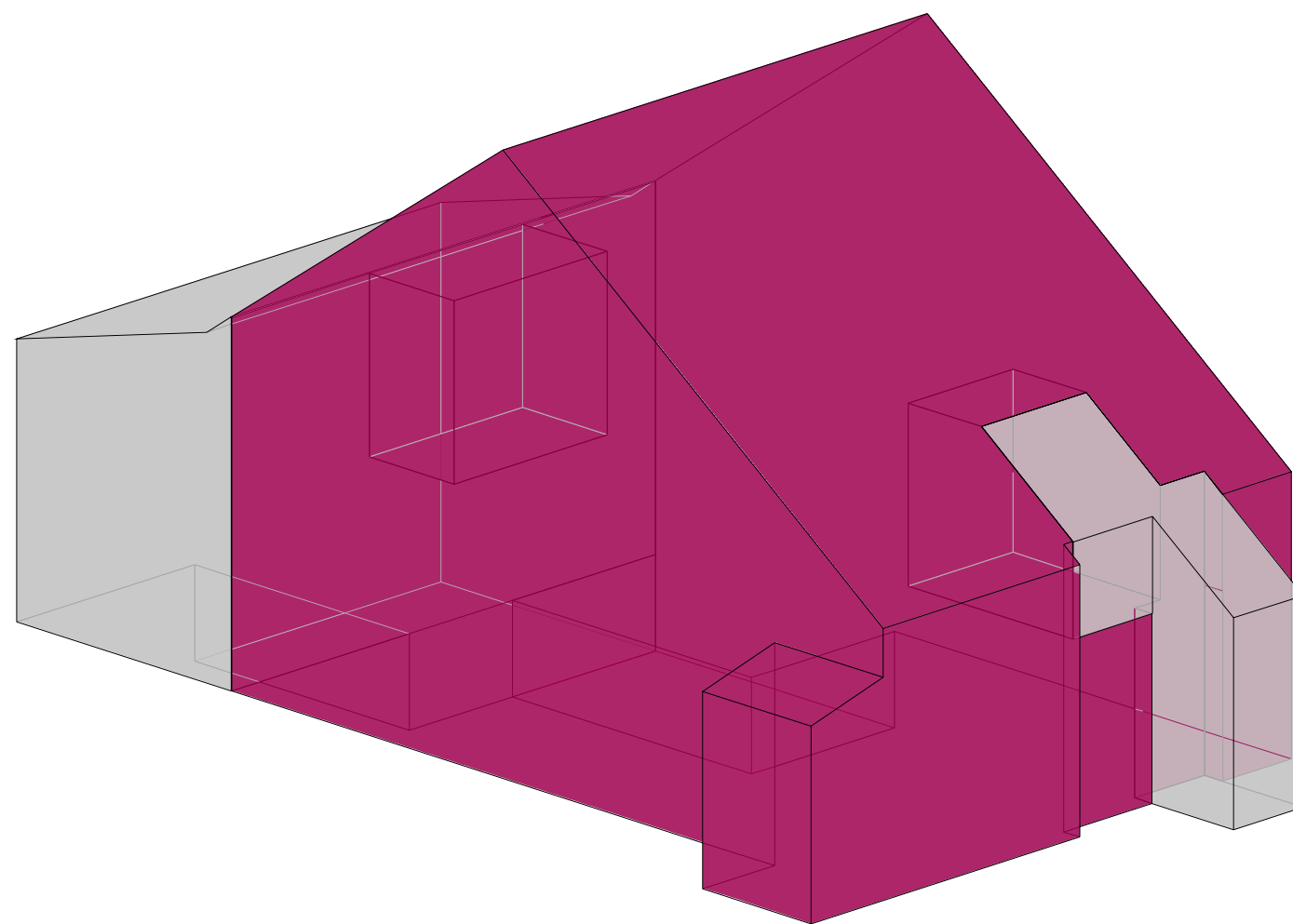


Combles

Surfaces utiles principales SUP		
Numéro	Nom	Surface
1.04	Wc	3.44 m ²
1.06	Cuisine	10.67 m ²
1.05	Salle à manger	24.43 m ²
1.02	Salon	40.58 m ²
3.05	Salle de bain	6.75 m ²
3.04	Chambre 1	15.69 m ²
3.11	Entrée	3.68 m ²
3.02	Hall	3.26 m ²
3.07	Chambre 2	17.88 m ²
3.06	Entrée	4.15 m ²
3.08	Salle de bain	11.42 m ²
4.03	Wc	2.13 m ²
4.04	Chambre	29.14 m ²
4.02	Hall	5.92 m ²
4.05	Salle de bain	6.32 m ²
1.01	Cage d'escaliers	10.30 m ²
1.00	Ascenseur	1.76 m ²
4.00	Ascenseur	1.76 m ²
3.12	Lift	1.76 m ²
3.01	Cage d'escaliers	11.76 m ²
4.01	Cage d'escaliers	6.99 m ²
TOTAL		219.77 m²

Surfaces utiles secondaires SUS		
Numéro	Nom	Surface
1.07	Economat	1.69 m ²
1.03	Bibliothèque	10.95 m ²
0.01	Buanderie	8.25 m ²
3.09	Dressing	5.25 m ²
3.10	Dressing	4.21 m ²
2.01	Réduit	14.98 m ²
TOTAL		45.33 m²

Surfaces d'installations SI		
Numéro	Nom	Surface
0.02	Technique	6.15 m ²
TOTAL		6.15 m²



Volume principal	
Nom	Volume

Volume principal	779.82 m ³
TOTAL	779.82 m ³

Volume annexe	
Nom	Volume

Volume annexe	250.10 m ³
TOTAL	250.10 m ³

Volume total: 1183.10 m³